

# DINSE Welding Connectors

*the genuine article*



- **Simple**
- **Safe**
- **Robust**
- **Durable**

DINSE is the **industry standard** for welding connectors. Still manufactured by DINSE, these products are of the highest quality, made from hard wearing materials.

The simple **twist action** makes for a quick, safe and straightforward connection. Once connected, the solid form fitted rubber sleeves provide complete protection.

The precisely machined DINSE **cone contact** guarantees both very high current carrying capacities and a reliable mechanical connection.

Original DINSE plugs and sockets always **fit each other perfectly**. This means that new parts and parts already in operation can always be used together.

## Current carrying capacities of welding cables

As a result of their cone-type fit, original DINSE plugs and sockets can always carry at least as much current as the cable that can be connected to them.

Welding cables should always be selected to have a sufficiently large cross-sectional area for the current to be carried and length of cable required. If cables with too small a cross-section are used, a significant amount of power will be lost due to resistances in the cable, particularly over longer cable runs.

Welding currents with respect to duty cycle and nominal cross-section using welding cables fabricated from copper (Cu) as per IEC 974-12.

Nominal cross-section (mm <sup>2</sup> )	Welding Current (A)	
	100% Duty Cycle	60% Duty Cycle
10 - 16	135	140
16 - 25	180	190
25 - 35	225	245
35 - 50	285	315
50 - 70	355	400
70 - 95	430	500
95 - 120	500	590

Recommended nominal cross-sections (mm<sup>2</sup>) of welding cables fabricated from copper (Cu) with respect to welding current and cable length.

Welding Current (A)	Cable Length (m)			
	≤ 10	> 10	> 50	> 100
100	25	35	50	70
200	35	50	70	95
300	50	70	95	120
400	70	95	120	
500	95	120		
600	120			



# DINSE Welding Connectors

*the genuine article*



## Cable Plugs



Cable size	Dinse part ref.	Olympus Part. no
<b>Miniature cable plug</b>		
10-25 mm <sup>2</sup>	SKM 10/25	200064
<b>Standard cable plugs</b>		
16-35 mm <sup>2</sup>	SK 16/35	200040
35-50 mm <sup>2</sup>	SK 35/50	200042
50-70 mm <sup>2</sup>	SK 50/70	200044
<b>Heavy duty cable plugs</b> (with 2 cable clamp screws)		
50-70 mm <sup>2</sup>	SKK 50/70	200046
70-95 mm <sup>2</sup>	SKK 70/95	200048
<b>Special "S" type cable plugs</b>		
70-95 mm <sup>2</sup>	SKS 70/95	200070
95-120 mm <sup>2</sup>	SKS 95/120	200076

## Cable Sockets



Cable size	Dinse part ref.	Olympus Part. no
<b>Miniature cable socket</b>		
10-25 mm <sup>2</sup>	BKM 10/25	200060
<b>Standard cable sockets</b>		
16-35 mm <sup>2</sup>	BK 16/35	200010
35-50 mm <sup>2</sup>	BK 35/50	200012
50-70 mm <sup>2</sup>	BK 50/70	200014
<b>Heavy duty cable sockets</b> (with 2 cable clamp screws)		
50-70 mm <sup>2</sup>	BKK 50/70	200016
70-95 mm <sup>2</sup>	BKK 70/95	200018
<b>Special "S" type cable sockets</b>		
70-95 mm <sup>2</sup>	BKS 70/95	200068
95-120 mm <sup>2</sup>	BKS 95/120	200074

- The industry standard welding connector from the original manufacturer.
- Simple twist action connection.
- Cone contact guarantees high current carrying capacities and reliable mechanical connection.
- Original DINSE plugs and sockets always fit each other perfectly.



## Panel Sockets



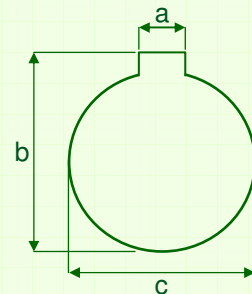
Connecting screw size	Dinse part ref.	Olympus Part. no
<b>Miniature panel socket</b>		
M8	BEM 25	200062
<b>Standard panel sockets</b>		
M10	BE 50/70	200024
M12	BE 70/95	200028
<b>Covered panel sockets</b> (with yellow cover flap)		
M10	BEK 50/70	200026
M12	BEK 70/95	200030
<b>Special "S" type panel sockets</b>		
M16	BES 95/120	200072

## Panel Plugs



Connecting screw size	Dinse part ref.	Olympus Part. no
<b>Miniature panel plug</b>		
M8	SEM 25	200066
<b>Standard panel plugs</b>		
M10	SE 50/70	200050
M12	SE 70/95	200052
<b>Special "S" type panel plugs</b>		
M16	SES 95/120	200078

## Panel Cut-out:



	BEM 25 SEM 25	BE(K) 50/70 BE(K) 70/95 SE 50/70 SE 70/95	BES 95/120 SES 95/120
a	6.3	6.3	6.3
b	22.7	33.2	38.2
c	20.2	30.2	35.2

## Cable Splice Connectors

Product type	Dinse part ref.	Olympus Part. no
<b>Cable splice connectors</b>		
Cable splice socket	KAB 70/95	200096
Cable splice plug	KAS 70/95	200098



**OLYMPUS**  
Technologies Ltd

Melbourne Works, 8 Firth Street,  
Huddersfield, HD1 3BA  
t: 01484 514513

e: sales@olympustechnologies.co.uk  
w: www.olympustechnologies.co.uk